



# Beny 2 Guns DC EV Charging Station (with liquid cooling)

## 120kW-360kW



Datasheet

**Zhejiang Benyi New Energy Co.,Ltd.**

Shuanghuanglou Industrial Zone, Beibaixiang Yueqing,zhejiang P.R. China

TEL: +86-577-5717 7008 FAX: +86-577-5717 7007

✉ info@evb.com 🏠 Importer:xxxxxxx

🌐 www.evb.com 📍 Address:xxxxxxx

♻️ This catalogue has been printed on ecological paper .

© Zhejiang Benyi New Energy Co.,Ltd. All rights reserved.

⚠️ If the models and specifications in this product catalogue change due to product updates, we will not provide prior notification.



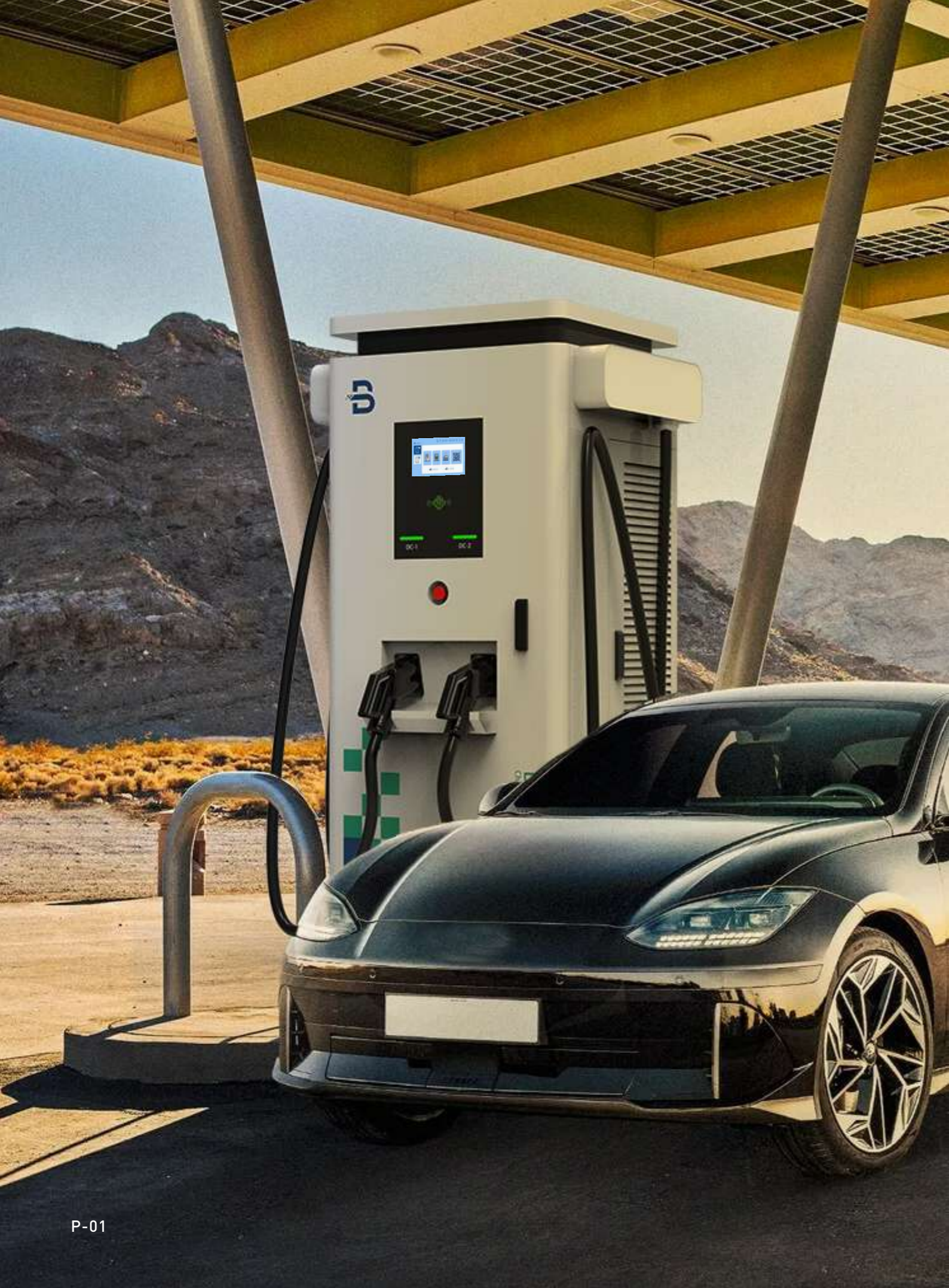
VERSION: 20241106-01

WWW.EVB.COM












# Product Overview

The EVB 2-Gun DC EV Charging Station, with liquid cooling, delivers a powerful 120kW to 360kW output. Featuring a 7-inch touch screen, OCPP 1.6J compliance, and IP55 rating, it ensures user-friendly operation and protection against environmental factors. With RFID authentication, APP control, Ethernet/4G/WiFi connectivity, and full protection measures, including a 500A capacity, it offers a comprehensive charging solution.



## Product Advantages

-  IP55 Rating
-  4G
-  Full Protection
-  Ethernet/4G/WiFi
-  Cable management
-  500A
-  7-inch Touch Screen
-  RFID
-  APP Control



# Model Selection

DC EV Charging Station	BLDC120-D	BLDC160-D	BLDC200-D
------------------------	-----------	-----------	-----------



Structure Description			
Shell Material	Sheet Metal		
Dimension	800*800*1800(L*W*H mm)		
Packing Dimension	1050*1000*1900(L*W*H mm)		
Weight	≤380kG	≤400kG	≤420kG
Installation Method	Floor-stand Type		
Cable Routing	Bottom Inlet Wiring,Up Outlet Wiring		
Total length of gun cable	5 m		
Charging Outlets	Double(CCS2+CCS2)		
Connectivity Authorization	RFID, App		
Screen	7 Inch LCD Screen/LED Light		
Electrical Specification			
AC Input Voltage	AC380V-415V, 3P+N+PE		
Rated Input Current	203A	272A	338A
Input Frequency	50Hz/60Hz		
Consumption	≤24W		
Rated Power	120kW	160kW	200kW
Output Voltage Range	CCS2: 150Vdc ~1000Vdc		
Output Current	CCS2:0~500A (liquid cooling)		
Efficiency	≥95%		
Power Factor	≥0.99(load:100%)		

Functionate Design	
User Interface	Emergency Stop Button,LED Indicator,Card Swiping,Touch Screen
Charging Stands	EN IEC 61851-1: 2019, IEC 61851-1: 2017, EN 61851-23: 2014, IEC 61851-23: 2014, EN 61851-24: 2014, IEC 61851-24: 2014, EN IEC 61000-6-2: 2019, EN IEC 61000-6-4:2019, EN IEC 61851-21-2: 2021
Communication	
OCPP	OCPP 1.6J
Network Interface	Ethernet/4G/WiFi
RF Parameters	
LTE-FDD Operating Frequency	B1/B2/B3/B4/B5/B7/B8/B12/B13/B18/B19/B20/B25/B26/B28
LTE-TDD Operating Frequency	B38/B39/B40/B41
UMTS Operating Frequency	B1/B2/B4/B5/B6/B8/B19
MIFARE Operating Frequency	13.56MHz±7K
2.4G WI-FI Operating Frequency	2412MHz-2484MHz
2.4G WI-FI Maximum Transmit Power	20.5 dBm
WCDMA Maximum Transmit Power	24 dBm +1/-3 dB
LTE-FDD Maximum Transmit Power	23 dBm±2 dB
LTE-TDD Maximum Transmit Power	23 dBm±2 dB
MIFARE Maximum Transmit Power	14.05dBuA/m
Environment Condition	
Application Place	Indoor/Outdoor
Working Altitude	<2000m
Storage Temperature	-30°C~+85°C
Working Temperature	-30°C~+50°C
Working Humidity	5%~95%
Protection Level	IP55 IK10( Screen IK08 )
Natural Cooling	Forced-air Cooling
Security Design	Over/Under Voltage Protection, Overload Protection, Current Leakage Protection, Grounding Protection, Over Temp Protection, Lightning Surge Protection

# Model Selection

DC EV Charging Station	BLDC240-D	BLDC280-D	BLDC320-D
------------------------	-----------	-----------	-----------



Structure Description			
Shell Material	Sheet Metal		
Dimension	800*800*1800(L*W*H mm)		
Packing Dimension	1050*1000*1900(L*W*H mm)		
Weight	≤440kG	≤460kG	≤480kG
Installation Method	Floor-stand Type		
Cable Routing	Bottom Inlet Wiring,Up Outlet Wiring		
Total length of gun cable	5 m		
Charging Outlets	Double(CCS2+CCS2)		
Connectivity Authorization	RFID, App		
Screen	7 Inch LCD Screen/LED Light		
Electrical Specification			
AC Input Voltage	AC380V-415V, 3P+N+PE		
Rated Input Current	406A	473A	540A
Input Frequency	50Hz/60Hz		
Consumption	≤24W		
Rated Power	240kW	280kW	320kW
Output Voltage Range	CCS2: 150Vdc ~1000Vdc		
Output Current	CCS2:0~500A (liquid cooling)		
Efficiency	≥95%		
Power Factor	≥0.99(load:100%)		

Functionate Design	
User Interface	Emergency Stop Button,LED Indicator,Card Swiping,Touch Screen
Charging Stands	EN IEC 61851-1: 2019, IEC 61851-1: 2017, EN 61851-23: 2014, IEC 61851-23: 2014, EN 61851-24: 2014, IEC 61851-24: 2014, EN IEC 61000-6-2: 2019, EN IEC 61000-6-4:2019, EN IEC 61851-21-2: 2021
Communication	
OCPP	OCPP 1.6J
Network Interface	Ethernet/4G/WiFi
RF Parameters	
LTE-FDD Operating Frequency	B1/B2/B3/B4/B5/B7/B8/B12/B13/B18/B19/B20/B25/B26/B28
LTE-TDD Operating Frequency	B38/B39/B40/B41
UMTS Operating Frequency	B1/B2/B4/B5/B6/B8/B19
MIFARE Operating Frequency	13.56MHz±7K
2.4G WI-FI Operating Frequency	2412MHz-2484MHz
2.4G WI-FI Maximum Transmit Power	20.5 dBm
WCDMA Maximum Transmit Power	24 dBm +1/-3 dB
LTE-FDD Maximum Transmit Power	23 dBm±2 dB
LTE-TDD Maximum Transmit Power	23 dBm±2 dB
MIFARE Maximum Transmit Power	14.05dBuA/m
Environment Condition	
Application Place	Indoor/Outdoor
Working Altitude	<2000m
Storage Temperature	-30°C~+85°C
Working Temperature	-30°C~+50°C
Working Humidity	5%~95%
Protection Level	IP55 IK10( Screen IK08 )
Natural Cooling	Forced-air Cooling
Security Design	Over/Under Voltage Protection, Overload Protection, Current Leakage Protection, Grounding Protection, Over Temp Protection, Lightning Surge Protection

# Model Selection

## DC EV Charging Station

## BLDC360-D



### Structure Description

Shell Material	Sheet Metal
Dimension	800*800*1800(L*W*H mm)
Packing Dimension	1050*1000*1900(L*W*H mm)
Weight	≤500kg
Installation Method	Floor-stand Type
Cable Routing	Bottom Inlet Wiring, Up Outlet Wiring
Total length of gun cable	5 m
Charging Outlets	Double(CCS2+CCS2)
Connectivity Authorization	RFID, App
Screen	7 Inch LCD Screen/LED Light

### Electrical Specification

AC Input Voltage	AC380V-415V, 3P+N+PE
Rated Input Current	608A
Input Frequency	50Hz/60Hz
Consumption	≤24W
Rated Power	360kW
Output Voltage Range	CCS2: 150Vdc ~1000Vdc
Output Current	CCS2:0~500A (liquid cooling)
Efficiency	≥95%
Power Factor	≥0.99(load:100%)

### Functionate Design

User Interface	Emergency Stop Button, LED Indicator, Card Swiping, Touch Screen
Charging Stands	EN IEC 61851-1: 2019, IEC 61851-1: 2017, EN 61851-23: 2014, IEC 61851-23: 2014, EN 61851-24: 2014, IEC 61851-24: 2014, EN IEC 61000-6-2: 2019, EN IEC 61000-6-4:2019, EN IEC 61851-21-2: 2021

### Communication

OCPP	OCPP 1.6J
Network Interface	Ethernet/4G/WiFi

### RF Parameters

LTE-FDD Operating Frequency	B1/B2/B3/B4/B5/B7/B8/B12/B13/B18/B19/B20/B25/B26/B28
LTE-TDD Operating Frequency	B38/B39/B40/B41
UMTS Operating Frequency	B1/B2/B4/B5/B6/B8/B19
MIFARE Operating Frequency	13.56MHz±7K
2.4G WI-FI Operating Frequency	2412MHz-2484MHz
2.4G WI-FI Maximum Transmit Power	20.5 dBm
WCDMA Maximum Transmit Power	24 dBm +1/-3 dB
LTE-FDD Maximum Transmit Power	23 dBm±2 dB
LTE-TDD Maximum Transmit Power	23 dBm±2 dB
MIFARE Maximum Transmit Power	14.05dBuA/m

### Environment Condition

Application Place	Indoor/Outdoor
Working Altitude	<2000m
Storage Temperature	-30°C~+85°C
Working Temperature	-30°C~+50°C
Working Humidity	5%~95%
Protection Level	IP55 IK10( Screen IK08 )
Natural Cooling	Forced-air Cooling
Security Design	Over/Under Voltage Protection, Overload Protection, Current Leakage Protection, Grounding Protection, Over Temp Protection, Lightning Surge Protection