



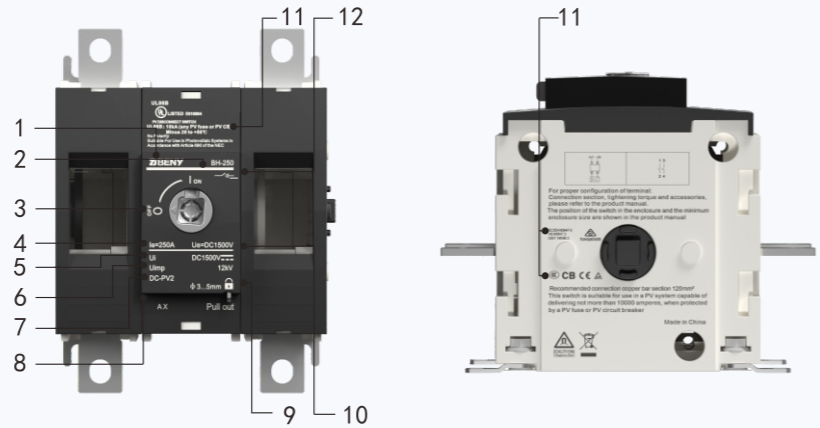
AS 60947.3  
IEC/EN 60947-3  
GB/T 14048.3  
UL98B

- 1 Brand
- 2 Model
- 3 On Off
- 4 Rated Current
- 5 Nominal Insulation Voltage
- 6 Rated Withstand Voltage
- 7 Utilization Category
- 8 Auxiliary Contact
- 9 Lockable Handle
- 10 Rated Voltage
- 11 Certificate Mark
- 12 Electrical Symbol

Application

**BENY** BH-250 DC disconnect switch is designed and developed forsolar PV inverter,combiner box or any DC equipments build-in accordingto UL98B. The DC load break switches provide safety isolation forone DC circuit up to 1500VDC 250 A

Appearance Introduction



Type Instruction

BH	-	250	-	2P	-	250A	-	/	-	A X
↓		↓		↓		↓		↓		↓
Model		Max Current		Pole		Rated Current		Assembling way		Auxiliary contact
PV DC Isolation Switch		250A		2P		250A		<input type="checkbox"/> Blank <input type="checkbox"/> A <input type="checkbox"/> B		<input type="checkbox"/> without <input type="checkbox"/> with

Parameter

Electrical Characteristics			
Product standard		IEC60947-3	UL98B
Rated Working Voltage	Ue	1000V/1500V	1500V
Agreed free air heating current	Ith	250A	
Rated impulse withstand voltage	Uimp	12kV	
Rated short-time withstand current	Icw	8kA/1s	10kA/50ms
Rated short-circuit making capacity	Icm	10kA	10kA/50ms
Contact resistance		< 0.5 mΩ	
Installation Environment			
Utilization Category		DC-PV2	\
Number of cycles of operation(With current)		200	400
Number of cycles of operation(Without current)		10000	
Pole		2	
Mounting		Base Screws Mounting	
Screws for mounting(M5)		2.0N·m~3.0N·m	
Wiring Screw(M8)		acc.IEC 60947-1 10N·m~15N·m	
Ambient temperature allowed between		-40°C ~ +80°C	
Storage temperature allowed between		-40°C ~ +85°C	
Relative Humidity		90%	
Pollution degree		3	
IP rating terminals		IP20	
Outside the ark handle		IP66	

Wiring Graph

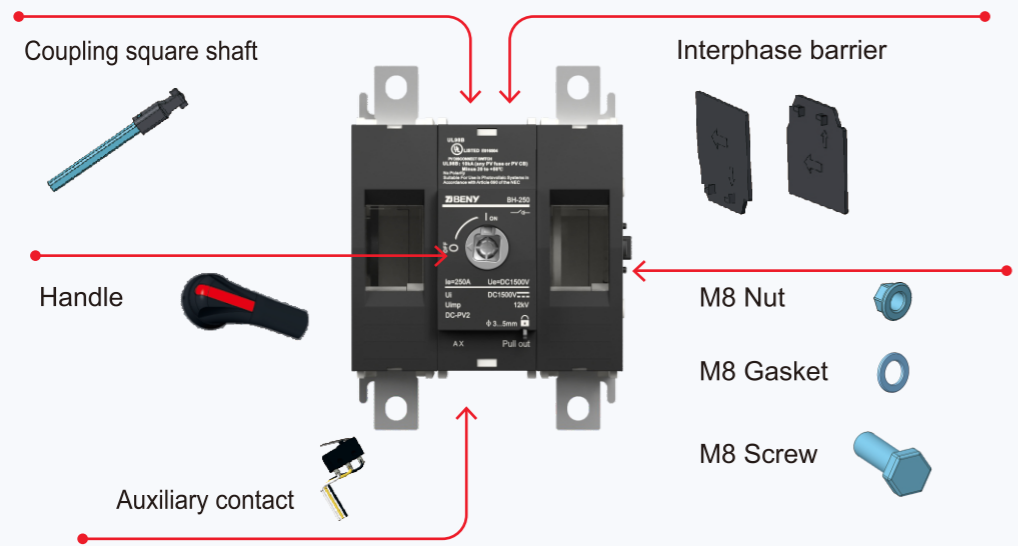
Product standard	Model	Wiring Graph	Ue rated operational voltage DC Volts	Rated operationnal current	Poles in series	Number of Strings
IEC60947-3	BH-250-2P-B		1000V	125A\160A 200A\250A	1	1
		Example	1500V			
UL98B			1500V	250A		

Product types choosing

BH-250-2P	BH-250-2P-A	BH-250-2P-B
Front operating handle	Front operating handle	Side handle

Switches and accessories

BH-250-2P Front and side operable products

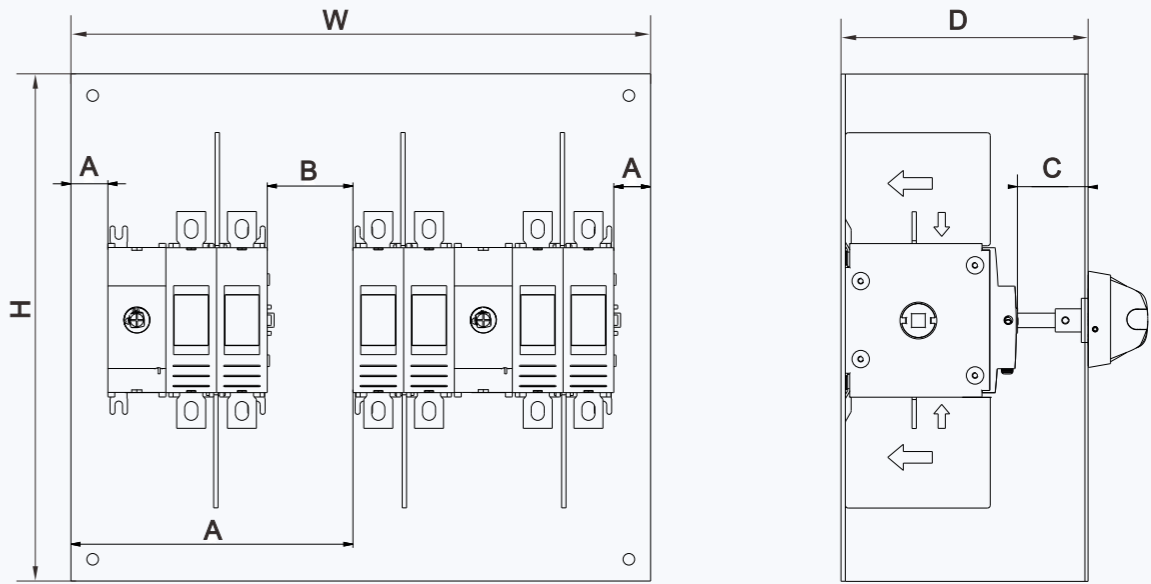


Accessory

Name	The attachment list
standard configuration	■ Handle
	■ Coupling square shaft (The standard length is 182mm)
	■ Interphase barrier
	■ M8 Binding kits
	■ Specification
apolegamy	<input type="checkbox"/> Auxiliary contact
	<input type="checkbox"/> Coupling square shaft Custom length ____ mm

Dimension(mm)

Minimum enclosure dimensions UL98  
Dimensions minimum des coffrets UL98B  
Dimensiones minimas de las cajas UL98B



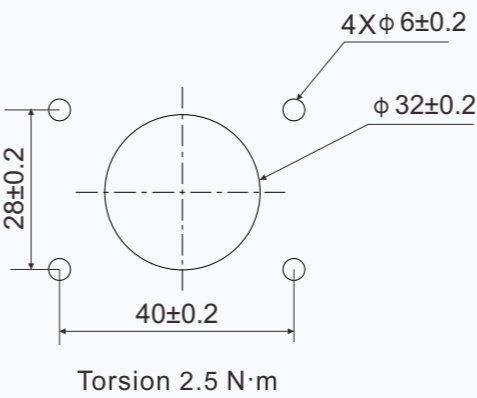
Minimum enclosure size	Size
H x W x D	400mm x 350mm x 180mm

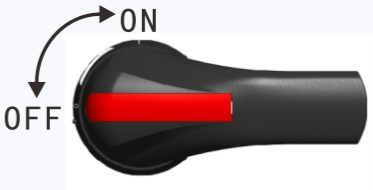
Clearance	Size
A min.	25.4mm
B min.	50.8mm
C min.	22mm

Handle installation for door clutch

Cut-out dimension



Front operating handle

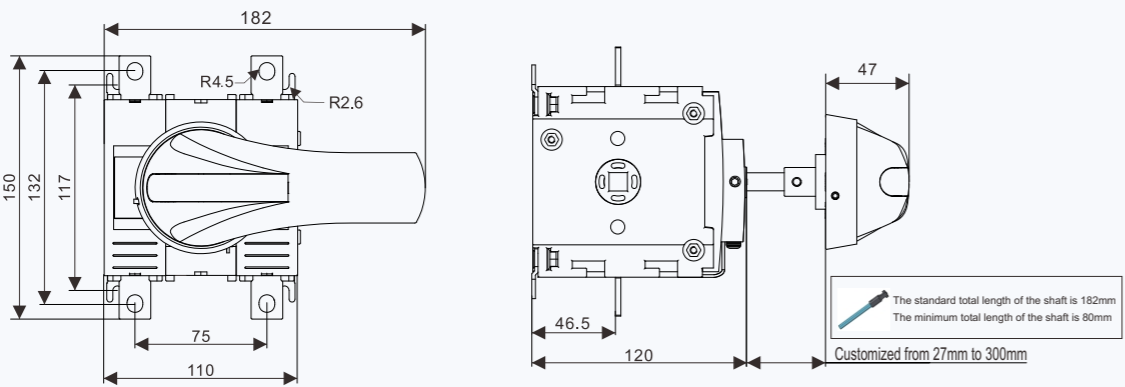


Side handle

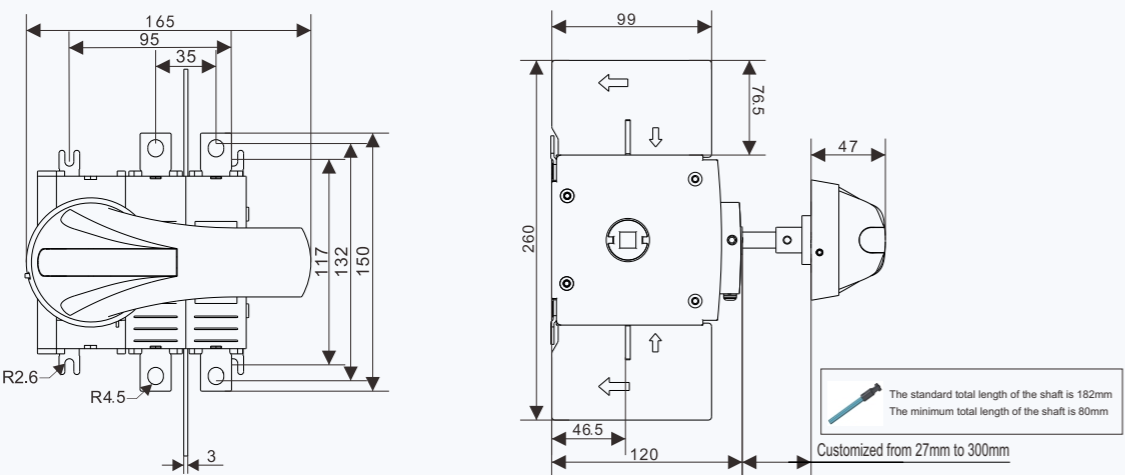


Dimension(mm)

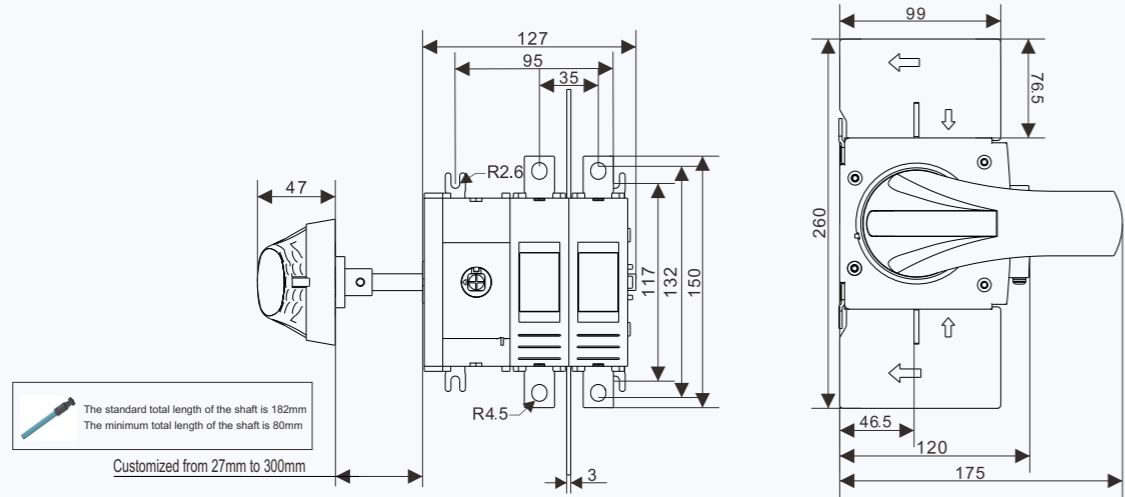
BH-250-2P



BH-250-2P-A



BH-250-2P-B



Derating data

Derating Temperature

Type	Current	Tem					
		-40°C ~ +55°C	+60°C	+65°C	+70°C	+75°C	+80°C
BH-250		250A	250A	250A	250A	250A	250A

Derating Altitude

Altitude	2000m	3000m	4000m	5000m
Power frequency withstand voltage	3820VDC	3820VDC	3820VDC	3820VDC
Isolation voltage	1500VDC	1500VDC	1500VDC	1500VDC
Working current	250A	250A	250A	250A
Working voltage	N / A			

Installatioin and use

Rated current(A)	125A	160A	200A	250A
Section area of copper row mm <sup>2</sup>	50mm <sup>2</sup>	70mm <sup>2</sup>	95mm <sup>2</sup>	120mm <sup>2</sup>

WARNING Verify that all connections(including bridging link connections) are suitable for the rated current, prepared to ensure only conductive parts are clamped and tightened to the manufacturers required torque before energization.